

Kerja Smart dengan Job Schedule Task

Oleh : Mulyono Rafianto

<http://rafianto.wordpress.com>

Pembahasan ini menitik beratkan pada fungsi job schedule task pada windows, ilustrasi dari penggunaannya sangatlah penting dalam memberikan informasi yang cepat dan akurat dari pengambil keputusan atau dari departemen / end user yang urgent dan care terhadap kepentingan informasi, dalam pembahasan di bawah akan di berikan beberapa contoh kasus.

Job schedule task atau Proses kerja Otomatis yang telah di tentukan dapat di optimal kan guna menyajikan data rekap akurat dari data row yang ada dalam perusahaan missal nya pembukuan transaksi row data invoice harian.

Pada aplikasi berbasis window dapat di temukan pada Control panel seberti berikut ini :



Dalam implementasi nya dapat di gunakan untuk fungsi fungsi otomatis seperti :

- Melakukan rekap harian dari transaksi sales.
- Membuat Graphic laporan per divisi, percabang, per area tertentu .
- Membuat laporan Excel / rekap excel dari data row MySQL, MS SQL, maupun dari Oracle.
- Mengirimkan Email Otomatis ke divisi / cabang atau bagian bagian tertentu.
- Menjalankan service tertentu misal Start dan Stop dari Servis Oracle Aplication Server (OAS).
- Merekap dan mengirim data Log dari server.
- dan fungsi lain lain nya

Waktu dari pelaksanaan Job schedule task biasa nya dilakukan pada saat informasi harian sudah close atau sudah tutup hari, biasa nya server yang melakukan proses job tengah malam sampai pagi hari.

Untuk memperjelas lagi marilah kita coba untuk mendalami proses job schedule task tersebut dan di implementasikan pada beberapa proses di bawah ini.

Jajaran manajemen atau marketing membutuhkan data harian yang akurat dari hasil rekap penjualan kemarin, sebulan, dan beberapa bulan lalu dalam urutan time series yang sudah harus di

dapat pada jam 5 atau jam 6 pagi berupa email - Attachment Excell. Untuk kebutuhan analisa besok pagi briefing guna menyusun penyesuaian target terhadap sales force nya pada keesokan hari nya.

Dari request tersebut tentulah **kita tidak akan masuk jam 3 atau 4 pagi** guna menyusun Excel dari hasil rekap row data Database Oracle dan sekaligus meng-email kan pada bagian bagian yang membutuhkan nya.

Memahami Job Schedule task, sebelum memecahkan case di atas, saya akan coba ilustrasikan satu job untuk mengirimkan data file ke ftp server secara otomatis pada jam 1 pagi dengan bat file yang di schedule-kan;

Buat script dengan Visual Fox seperti ini

```
* membuat dulu file ep1.txt
ep1 = "test"+chr(10)
ep1 = ep1 + "test"+CHR(10)
ep1 = ep1 + "cd /dms"+CHR(10)
ep1 = ep1 + "pwd"+CHR(10)
ep1 = ep1 + "ascii"+CHR(10)
ep1 = ep1 + "put "+gDEmail+"\ "+_b1+CHR(10)
ep1 = ep1 + "quit"
```

```
STORE FCREATE(".\temp\ep1.txt") TO gnFile
FWRITE(gnFile , ep1)
FCLOSE(gnFile)
RUN ftp -s:.\temp\ep1.txt ftp.xxxx.co.id
```

Atau buat dengan cara konvensional berikut ini; buat dua buah file **txt** dan **bat** pada root c:

buat pada **c:\ep1.txt**

Isi nya:

```
test
test
cd/dms
pwd
ascii
put c:\namafile_binary (contoh : c:\data.xls)
quit
```

buat pada **c:\ kirim.bat**

isi nya:

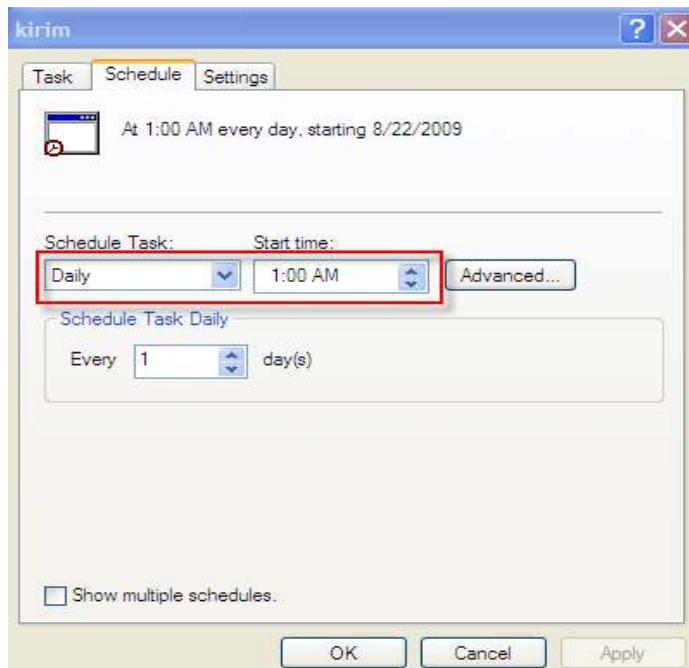
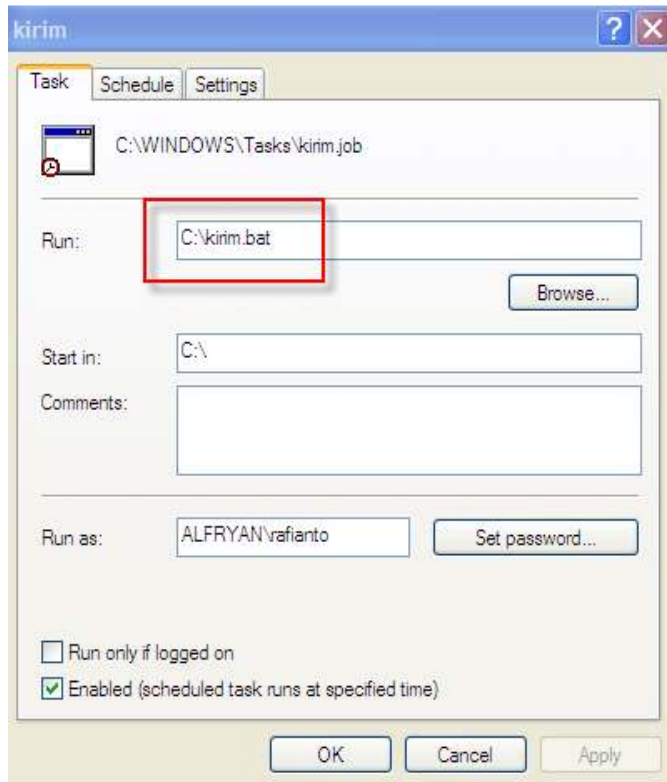
```
ftp -s:c:\ep1.txt ftp.xxxxx.co.id
```

kirim.bat adalah proses pengiriman file **data.xls** pada directory root c:\ yang akan di job schedule kan proses nya pada jam 1 pagi.

Buat Job Schedule Task nya seperti berikut ini :

Add Scheduled Task			
GoogleUpdateTaskMachineCore	Multiple schedule times	At user logon	6:40:22 PM ...
GoogleUpdateTaskMachineUA	Every 1 hour(s) from 3:26 PM for 24 hour(s...	8:26:00 PM 8/22/2009	7:26:00 PM ...
 kirim	At 1:00 AM every day, starting 8/22/2009	1:00:00 AM 8/23/2009	Never

Dengan rincian proses sebagai berikut ini :

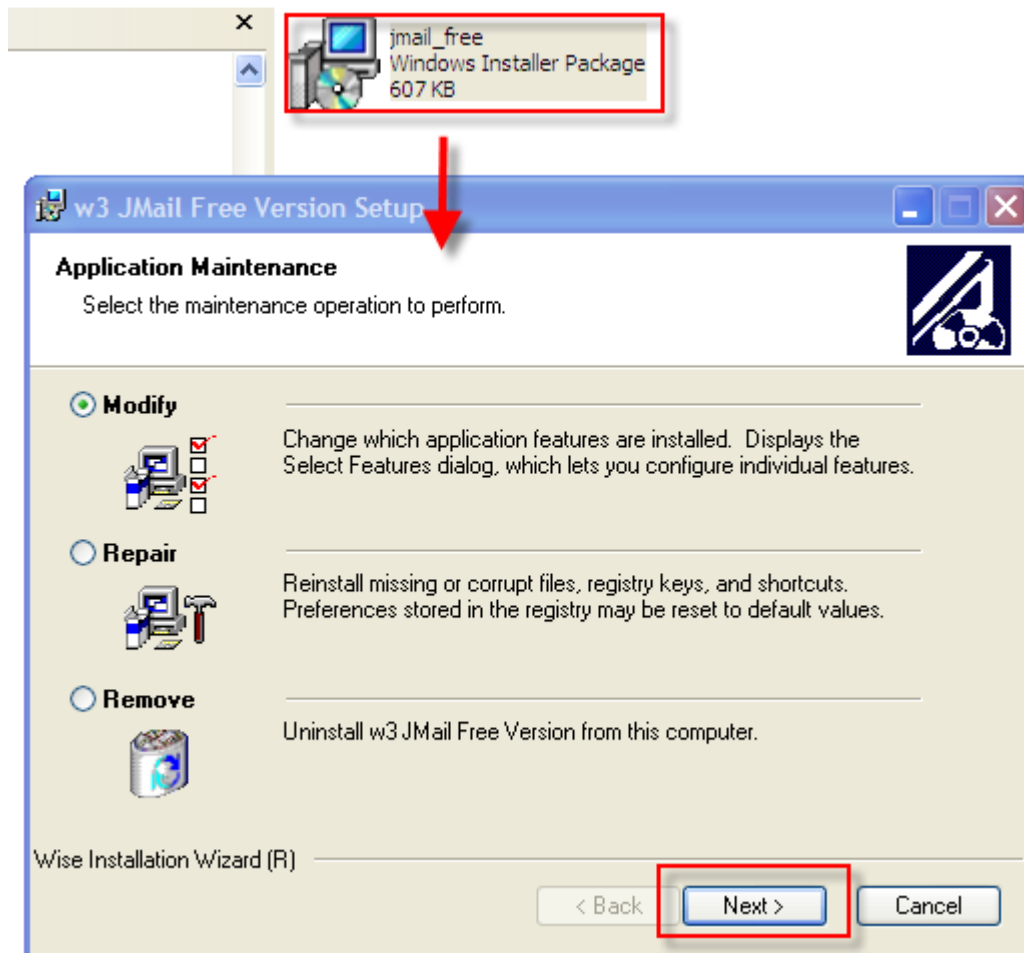


Job schedule task akan berjalan sesuai dengan keinginan kita yaitu mengirimkan file pada root c:\data.xls ke directory FTP Server dms dengan user test dan password test pada <ftp.xxxxx.co.id> setiap jam 1 pagi, setiap hari.

Ilustrasi tersebut mudah mudahan cukup jelas.

Untuk tingkat advance kita akan coba kupas dan kita pecahkan case tersebut di atas, kita akan coba buat exe program dengan Visual Fox8 yang berfungsi menurun-kan / data mining dari raw data oracle menjadi file excel, (dalam bab pembahasan sebelum nya beberapa kali saya sudah membuatkan proses melukis excel baik dengan Microsoft Visual Foxpro8 maupun dengan Aplikasi OAS (Oracle Deplover under web) yang menghasilkan file file excel yang ditempatkan pada server atau File Server.

Untuk selanjutnya kita buat proses pembuatan excel tersebut pada jam tengah malam setelah data sales close atau data telah update secara akurat, dengan menggunakan job schedule task kemudian dirangkai kan dengan pengiriman melalui email (aplikasi Visual foxpro membutuhkan aplikasi pengiriman email tersendiri additional yaitu dengan menggunakan jmail).



Procedure pengiriman Email dengan w3 JMail Free (di implementasikan pada Visual Fox), adalah sbb:

Contoh Procedure kirimemail

```

PROCEDURE kirimmail
PARAMETERS para1,para2,para3,para4
PUBLIC oSMTPMail
oSMTPMail = NEWOBJECT("jmail.SMTPMail")
oSMTPMail.ServerAddress = "smtp.server.mail"
oSMTPMail.AddRecipient ( para3 )
oSMTPMail.Sender = "server@xxxxx.co.id"
oSMTPMail.SenderName = "Server Report System"
oSMTPMail.Subject = para1
oSMTPMail.Body = para2
IF !EMPTY(para4)
oSMTPMail.AddAttachment( para4)
ENDIF
oSMTPMail.Execute()
RELEASE oSMTPMail

```

Akhirnya kita coba susun aplikasi (dengan Visual Fox – compile menjadi exe) dan Schedule kan pada Job Schedule task, tentukan waktu eksekusi program tersebut dengan perhitungan cermat bahwa row data kira kira telah lengkap (misal jam 11 malam). Kita buat Job Task Schedule jam 12:30 an malam.

Proses Create Excel dan Proses log nya kita antisipasi selesai ½ sampai dengan 1..2 jam. Maka dengan Otomatis System akan mengirimkan Email include Attachment pada sekitar jam 2 an malam, demikian penjelasan Ilustrasinya.

Satu Program pembuatan (Melukis Excel – Visual Fox8)

Parameter form inputan nya sebaik nya di hilangkan jadi menjadi file Exe yang utuh dengan parameter bisa di ambil dari INI File (dalam aplikasi Koprasi sudah di jelaskan cukup jelas) / Contoh Program **kirim_report_email.exe**

```

LOCAL _bln,_bln2,_thn,qTemp,_datac
LOCAL _blnstr,_blnstr2
LOCAL a,b
LOCAL _direk

a = SECONDS()

thisform.Label3.Caption = 'Begin Proses.....'
_thn = SPACE(4)
_thn = ALLTRIM(thisform.Text1.Value)
_bln = ALLTRIM(thisform.Combo1.DisplayValue)
_bln2 = ALLTRIM(thisform.Combo2.DisplayValue)
_datac = ALLTRIM(thisform.Text2.Value)

IF !FILE(gServer+'\'+'_datac+'.dbf')
MESSAGEBOX('File '+gServer+'\'+'_datac+'.dbf tidak ada !',64,'Pesan')
RETURN
ENDIF

_direk = ALLTRIM(thisform.Text3.Value)

IF !DIRECTORY(_direk)

```

```
MESSAGEBOX('Direktory '+_direk+' tidak ada / kosong / tidak di isi !',64,'Pesan')
RETURN
ENDIF
```

```
DO case
```

```
  CASE _bln = "Januari"
    _blnstr = '01'
  CASE _bln = "Februari"
    _blnstr = '02'
  CASE _bln = "Maret"
    _blnstr = '03'
  CASE _bln = "April"
    _blnstr = '04'
  CASE _bln = "Mei"
    _blnstr = '05'
  CASE _bln = "Juni"
    _blnstr = '06'
  CASE _bln = "Juli"
    _blnstr = '07'
  CASE _bln = "Agustus"
    _blnstr = '08'
  CASE _bln = "September"
    _blnstr = '09'
  CASE _bln = "Oktober"
    _blnstr = '10'
  CASE _bln = "November"
    _blnstr = '11'
  CASE _bln = "Desember"
    _blnstr = '12'
```

```
ENDCASE
```

```
DO case
```

```
  CASE _bln2 = "Januari"
    _blnstr2 = '01'
  CASE _bln2 = "Februari"
    _blnstr2 = '02'
  CASE _bln2 = "Maret"
    _blnstr2 = '03'
  CASE _bln2 = "April"
    _blnstr2 = '04'
  CASE _bln2 = "Mei"
    _blnstr2 = '05'
  CASE _bln2 = "Juni"
    _blnstr2 = '06'
  CASE _bln2 = "Juli"
    _blnstr2 = '07'
  CASE _bln2 = "Agustus"
    _blnstr2 = '08'
  CASE _bln2 = "September"
    _blnstr2 = '09'
  CASE _bln2 = "Oktober"
    _blnstr2 = '10'
  CASE _bln2 = "November"
    _blnstr2 = '11'
  CASE _bln2 = "Desember"
    _blnstr2 = '12'
```

```
ENDCASE
```

```

**MESSAGEBOX(_thn+' '+_blnstr,0,'Wait...')

thisform.Label3.ForeColor = 255
thisform.Label3.Caption = 'Waiting to Create Cursor.....'

store "q"+padl(allt(str(rand()*1000000,7)),7,"0")+".dbf" to qTemp1

*** cursor **
* SELECT distinct branch, xkodedept, xkodesup, xklasprod, division, supplier, productgrp
* -----
SELECT distinct xkodedept, xkodesup, xklasprod, division, supplier, productgrp,;
sum(IIF(document='FAKTUR',total_hna,0)) GROSS_SALE, ;
sum(IIF(document#'FAKTUR',total_hna,0)) SALES_RET,;
sum(gross_inv) GROSS_INV,;
sum(IIF(document='FAKTUR',gross_inv,0)) GR_INVFAKT, ;
sum(IIF(document#'FAKTUR',gross_inv,0)) GR_INVRETR,;
SUM(DEF_PRICE) SEL_HARGA,;
SUM(DISC_CB+DISC_CK+DISC_CE+DISC_CASH) CDONI,;
SUM(DISC_PB+DISC_PK+DISC_PE) PDONI,;
SUM(DISC_CDOF+DISC_CDOF2) CDOFI,;
SUM(DISC_PDOF+DISC_PDOF2) PDOFI,;
SUM(IIF(document='FAKTUR',hpptotal,0)) hpp_fakt,;
SUM(IIF(document#'FAKTUR',hpptotal,0)) hpp_retr,;
SUM(HPPTOTAL) HPP_TOTAL;
FROM gServer+'\'+'_data+'.dbf';
WHERE TRN_YEAR=_THN;
AND BETWEEN(TRN_MONTH,_BLNSTR,_BLNSTR2);
GROUP BY 1, 2, 3, 4, 5, 6 INTO TABLE gDTemp+'\'+'_qTemp1

USE
SELECT 0
USE gDTemp+'\'+'_qTemp1 alias datacur excl

SELECT 0
USE gDatax+'\'_rkrekaptmp08.dbf' EXCLUSIVE
SET ORDER TO KEY1

SELECT 0
USE gDatax+'\'_rekap2008.dbf' EXCLUSIVE
SET ORDER TO KEY1

SELECT rkrekaptmp08
ZAP
PACK
REINDEX

SELECT datacur
GO TOP
DO WHILE !EOF()
    SELECT rkrekaptmp08
    APPEND BLANK
    REPLACE xkodedept WITH datacur.xkodedept
    REPLACE xkodesup WITH datacur.xkodesup

REPLACE xklasprod WITH datacur.xklasprod
REPLACE division WITH datacur.division
REPLACE supplier WITH datacur.supplier

```

REPLACE productgrp WITH datacur.productgrp

REPLACE gros_sales WITH datacur.gross_sale
REPLACE sales_ret WITH datacur.sales_ret
REPLACE gross_inv WITH datacur.gross_inv

REPLACE gr_invfakt WITH datacur.gr_invfakt
REPLACE gr_invretr WITH datacur.gr_invretr

REPLACE sel_harga WITH datacur.sel_harga
REPLACE cdoni WITH datacur.cdoni
REPLACE pdoni WITH datacur.pdoni
REPLACE cdofi WITH datacur.cdofi
REPLACE pdofi WITH datacur.pdofi

REPLACE hpp_fakt WITH datacur.hpp_fakt
REPLACE hpp_retr WITH datacur.hpp_retr
REPLACE hpp_total WITH datacur.hpp_total

REPLACE ptahun WITH _thn
REPLACE pbulan WITH _blnstr
REPLACE pbulan2 WITH _blnstr2
FLUSH

SELECT datacur
SKIP
ENDDO

SELECT * from rkrekaptmp08 INTO CURSOR cur_rkrekap READWRITE

SELECT rekap2008
ZAP
PACK
REINDEX

SELECT cur_rkrekap
GO top
DO WHILE !EOF()
SELECT rekap2008
APPEND BLANK
REPLACE xkodedept WITH cur_rkrekap.xkodedept
REPLACE xkodesup WITH cur_rkrekap.xkodesup
REPLACE xklasprod WITH cur_rkrekap.xklasprod
REPLACE division WITH cur_rkrekap.division
REPLACE supplier WITH cur_rkrekap.supplier
REPLACE productgrp WITH cur_rkrekap.productgrp

REPLACE gros_sales WITH cur_rkrekap.gros_sales
REPLACE gross_inv WITH cur_rkrekap.gross_inv

REPLACE gr_invfakt WITH cur_rkrekap.gr_invfakt
REPLACE gr_invretr WITH cur_rkrekap.gr_invretr

REPLACE sales_ret WITH cur_rkrekap.sales_ret
REPLACE sel_harga WITH cur_rkrekap.sel_harga
REPLACE cdoni WITH cur_rkrekap.cdoni

REPLACE pdoni WITH cur_rkrekap.pdoni

```
REPLACE cdofi WITH cur_rkrekap.cdofi
REPLACE pdofi WITH cur_rkrekap.pdofi
```

```
imark = cur_rkrekap.sel_harga
```

```
REPLACE mark_up WITH IIF(imark < 0, imark, 0)
REPLACE mark_down WITH IIF(imark > 0, imark, 0)
```

```
REPLACE hpp_fakt WITH cur_rkrekap.hpp_fakt
REPLACE hpp_retr WITH cur_rkrekap.hpp_retr
REPLACE hpp_total WITH cur_rkrekap.hpp_total
```

```
REPLACE ptahun WITH _thn
REPLACE pbulan WITH _blnstr
REPLACE pbulan2 WITH _blnstr2
FLUSH
```

```
SELECT cur_rkrekap
SKIP
ENDDO
```

```
LOCAL _dariemail,_keemail,_byemail,_isi,Formulax,Frmx1,Frmx2,_divx,_divy
```

```
LOCAL _bln,_thn, qTemp, pathdef,lnROW,lnCOL,_supplier,_headerx,_xdivisi,_xdivisix
```

```
LOCAL hit1,hit2,hit3,hit4,x,_rhitung
LOCAL sb1,sb2,sb3,sb4,sb5,sb6,sb7,sb8,sb9,sb10
LOCAL sb11,sb12,sb13,sb14,sb15,sb16,sb17,sb18,sb19,sb20
LOCAL sb21,sb22,sb23,sb24,sb25,sb26,sb27,sb28,sb29,sb30,sb31
```

```
LOCAL st1,st2,st3,st4,st5,st6,st7,st8,st9,st10
LOCAL st11,st12,st13,st14,st15,st16,st17,st18,st19,st20
LOCAL st21,st22,st23,st24,st25,st26,st27,st28,st29,st30,st31
```

```
LOCAL sd1,sd2,sd3,sd4,sd5,sd6,sd7,sd8,sd9,sd10
LOCAL sd11,sd12,sd13,sd14,sd15,sd16,sd17,sd18,sd19,sd20
LOCAL sd21,sd22,sd23,sd24,sd25,sd26,sd27,sd28,sd29,sd30,sd31
```

```
LOCAL sg1,sg2,sg3,sg4,sg5,sg6,sg7,sg8,sg9,sg10
LOCAL sg11,sg12,sg13,sg14,sg15,sg16,sg17,sg18,sg19,sg20
LOCAL sg21,sg22,sg23,sg24,sg25,sg26,sg27,sg28,sg29,sg30,sg31
```

```
STORE 0 TO sb1,sb2,sb3,sb4,sb5,sb6,sb7,sb8,sb9,sb10, ;
sb11,sb12,sb13,sb14,sb15,sb16,sb17,sb18,sb19,sb19a,sb20, ;
sb21,sb22,sb23,sb24,sb25,sb26,sb27,sb28,sb29,sb30,sb31
```

```
STORE 0 TO st1,st2,st3,st4,st5,st6,st7,st8,st9,st10, ;
st11,st12,st13,st14,st15,st16,st17,st18,st19,st20, ;
st21,stb22,st23,st24,st25,st26,st27,st28,st29,st30,st31
```

```
STORE 0 TO sd1,sd2,sd3,sd4,sd5,sd6,sd7,sd8,sd9,sd10, ;
sd11,sd12,sd13,sd14,sd15,sd16,sd17,sd18,sd19,sd20, ;
sd21,sdb22,sd23,sd24,sd25,sd26,sd27,sd28,sd29,sdb31
```

```
** for grand total **
```

```
STORE 0 TO sg01,sg02,sg03,sg04,sg05,sg06,sg07,sg08,sg09,sg10, ;
sg11,sg12,sg13,sg14,sg15,sg16,sg17,sg18,sg19,sg20, ;
sg21,sg22,sg23,sg24,sg25,sg26,sg27,sg28,sg29,sg30,sg31
```

```
STORE 0 TO hit1,hit2,hit3,hit4
```

```
CLOSE DATABASES
```

```
CLOSE TABLES
```

```
pathdef = _direk
```

```
* SET DEFAULT TO &pathdef
```

```
store "q"+padl(alt(str(rand()*1000000,7)),7,"0")+".dbf" to qTemp1
```

```
SELECT 0
```

```
USE gDatax+'\\rekap2008.dbf' SHARE
```

```
SET ORDER TO KEY1
```

```
thisform.Label3.ForeColor = 255
```

```
thisform.Label3.Caption = 'Perhitungan Rekap.....'
```

```
SELECT rekap2008
```

```
GO top
```

```
SCAN
```

```
REPLACE salesafret WITH gros_sales + sales_ret
```

```
REPLACE donitotal WITH cdoni + pdoni
```

```
REPLACE hrgfaktur WITH salesafret - sel_harga
```

```
REPLACE revenue1 WITH hrgfaktur - donitotal
```

```
REPLACE dofitotal WITH cdofi + pdofi
```

```
REPLACE revenue2 WITH revenue1 - dofitotal
```

```
REPLACE gp1 WITH revenue2 - hpp_total
```

```
flush
```

```
ENDSCAN
```

```
SELECT krekap2008
```

```
INDEX ON xkodedept+xkodesup+xklasprod+division+supplier+productgrp TO gTemp+'\\'+qTemp1
```

```
SET ORDER TO 1
```

```
_thn = rekap2008.ptahun
```

```
_bln = rekap2008.pbulan
```

```
_bln2 = rekap2008.pbulan2
```

```
SELECT DIST xkodesup, SUPPLIER FROM rekap2008 INTO CURSOR CUR_SUPPLIER READWRITE ORDER BY 1
```

```
thisform.Label3.Caption = 'Buat Header Excell.....'
```

```
nmfl1 = 'R08_'+SUBSTR(ALLTRIM(_THN),3,2)+ALLTRIM(_BLN)+ALLTRIM(_BLN2)
```

```
new_excel_file = pathdef + nmfl1
```

```
IF !DIRECTORY(pathdef)
```

```
MKDIR pathdef
```

```
ENDIF
```

```
**** CREATE HEADER
```

```
oleApp=Createobject("Excel.Application")
```

```
oleApp.Visible=.F.
```

```
oleApp.Workbooks.add
```

```
nameole = right(oleApp.caption,len(oleApp.caption)-at('Book',oleApp.caption)+1)
```

```
oleApp.windows(nameole).activate
```

```
oleApp.sheets("sheet1").select
```

```
oleApp.Cells.Select
```

```
oleApp.Cells.Font.size = 12
oleApp.Cells.Name="ARIAL"
```

```
oleapp.ActiveWindow.Zoom=80
oleApp.Selection.NumberFormat = "General"
oleApp.Cells.VerticalAlignment = 2
oleApp.Cells(1,1).Select
```

```
oleApp.sheets("sheet1").name='REKAP'
*****
```

```
_headerx = 'Laporan Penjualan dan Gross Profit, Periode Bulan '+_BLN+' s/d BULAN '+_BLN2+' Tahun '+_THN
*****
```

```
oleApp.Sheets('REKAP').Cells(1,1).Value='PT.XXXXXXXXXXX'
oleApp.Sheets('REKAP').Cells(1,1).Font.size = 12
oleApp.Sheets('REKAP').Cells(1,1).Font.Bold = .T.
oleApp.Sheets('REKAP').Cells(1,1).Font.ColorIndex = 5
```

```
oleApp.Sheets('REKAP').Cells(2,1).Value='LAPORAN PENJUALAN DAN GROSS PROFIT'
oleApp.Sheets('REKAP').Cells(2,1).Font.Bold = .T.
oleApp.Sheets('REKAP').Cells(2,1).Font.ColorIndex = 5
```

```
oleApp.Sheets('REKAP').Cells(3,1).Value='PERIODE LAPORAN BULAN '+_BLN+' s/d BULAN '+_BLN2+' TAHUN '+_THN
oleApp.Sheets('REKAP').Cells(3,1).Font.Bold = .T.
oleApp.Sheets('REKAP').Cells(3,1).Font.ColorIndex = 5
```

```
oleApp.Sheets('REKAP').Cells(4,1).Value='REKAP ALL CABANG'
oleApp.Sheets('REKAP').Cells(4,1).Font.Bold = .T.
oleApp.Sheets('REKAP').Cells(4,1).Font.ColorIndex = 5
```

**** Header ****

```
oleApp.Sheets('REKAP').Cells(6,1).Value='GROUP'
oleApp.Sheets('REKAP').Cells(6,1).Font.Bold = .T.
oleApp.Sheets('REKAP').Cells(6,1).Font.ColorIndex = 5
```

```
oleApp.Sheets('REKAP').Cells(6,2).Value='GROSS'
oleApp.Sheets('REKAP').Cells(6,2).Font.Bold = .T.
oleApp.Sheets('REKAP').Cells(6,2).Font.ColorIndex = 5
```

```
oleApp.Sheets('REKAP').Cells(6,3).Value='SEL.HARGA'
oleApp.Sheets('REKAP').Cells(6,3).Font.Bold = .T.
oleApp.Sheets('REKAP').Cells(6,3).Font.ColorIndex = 5
```

```
oleApp.Sheets('REKAP').Cells(6,4).Value='SEL.HARGA'
oleApp.Sheets('REKAP').Cells(6,4).Font.Bold = .T.
oleApp.Sheets('REKAP').Cells(6,4).Font.ColorIndex = 5
```

```
oleApp.Sheets('REKAP').Cells(6,5).Value=""
oleApp.Sheets('REKAP').Cells(6,5).Font.Bold = .T.
oleApp.Sheets('REKAP').Cells(6,5).Font.ColorIndex = 5
```

```
oleApp.Sheets('REKAP').Cells(6,6).Value='HARGA'
oleApp.Sheets('REKAP').Cells(6,6).Font.Bold = .T.
oleApp.Sheets('REKAP').Cells(6,6).Font.ColorIndex = 5
```

```
oleApp.Sheets('REKAP').Cells(6,7).Value='DONI'
oleApp.Sheets('REKAP').Cells(6,7).Font.Bold = .T.
oleApp.Sheets('REKAP').Cells(6,7).Font.ColorIndex = 5
```

oleApp.Sheets('REKAP').Cells(6,8).Value=""
oleApp.Sheets('REKAP').Cells(6,8).Font.Bold = .T.
oleApp.Sheets('REKAP').Cells(6,8).Font.ColorIndex = 5

oleApp.Sheets('REKAP').Cells(6,9).Value='DONI'
oleApp.Sheets('REKAP').Cells(6,9).Font.Bold = .T.
oleApp.Sheets('REKAP').Cells(6,9).Font.ColorIndex = 5

oleApp.Sheets('REKAP').Cells(6,10).Value=""
oleApp.Sheets('REKAP').Cells(6,10).Font.Bold = .T.
oleApp.Sheets('REKAP').Cells(6,10).Font.ColorIndex = 5

oleApp.Sheets('REKAP').Cells(6,11).Value='TOTAL'
oleApp.Sheets('REKAP').Cells(6,11).Font.Bold = .T.
oleApp.Sheets('REKAP').Cells(6,11).Font.ColorIndex = 5

oleApp.Sheets('REKAP').Cells(6,12).Value=""
oleApp.Sheets('REKAP').Cells(6,12).Font.Bold = .T.
oleApp.Sheets('REKAP').Cells(6,12).Font.ColorIndex = 5

oleApp.Sheets('REKAP').Cells(6,13).Value='DOFI'
oleApp.Sheets('REKAP').Cells(6,13).Font.Bold = .T.
oleApp.Sheets('REKAP').Cells(6,13).Font.ColorIndex = 5

oleApp.Sheets('REKAP').Cells(6,14).Value=""
oleApp.Sheets('REKAP').Cells(6,14).Font.Bold = .T.
oleApp.Sheets('REKAP').Cells(6,14).Font.ColorIndex = 5

oleApp.Sheets('REKAP').Cells(6,15).Value='DOFI'
oleApp.Sheets('REKAP').Cells(6,15).Font.Bold = .T.
oleApp.Sheets('REKAP').Cells(6,15).Font.ColorIndex = 5

oleApp.Sheets('REKAP').Cells(6,16).Value=""
oleApp.Sheets('REKAP').Cells(6,16).Font.Bold = .T.
oleApp.Sheets('REKAP').Cells(6,16).Font.ColorIndex = 5

oleApp.Sheets('REKAP').Cells(6,17).Value='DOFI'
oleApp.Sheets('REKAP').Cells(6,17).Font.Bold = .T.
oleApp.Sheets('REKAP').Cells(6,17).Font.ColorIndex = 5

oleApp.Sheets('REKAP').Cells(6,18).Value=""
oleApp.Sheets('REKAP').Cells(6,18).Font.Bold = .T.
oleApp.Sheets('REKAP').Cells(6,18).Font.ColorIndex = 5

oleApp.Sheets('REKAP').Cells(6,19).Value='RETUR'
oleApp.Sheets('REKAP').Cells(6,19).Font.Bold = .T.
oleApp.Sheets('REKAP').Cells(6,19).Font.ColorIndex = 5

oleApp.Sheets('REKAP').Cells(6,20).Value='%'
oleApp.Sheets('REKAP').Cells(6,20).Font.Bold = .T.
oleApp.Sheets('REKAP').Cells(6,20).Font.ColorIndex = 5

oleApp.Sheets('REKAP').Cells(6,21).Value='REVENUE'
oleApp.Sheets('REKAP').Cells(6,21).Font.Bold = .T.
oleApp.Sheets('REKAP').Cells(6,21).Font.ColorIndex = 5

oleApp.Sheets('REKAP').Cells(6,22).Value='%'
oleApp.Sheets('REKAP').Cells(6,22).Font.Bold = .T.

oleApp.Sheets('REKAP').Cells(6,22).Font.ColorIndex = 5

oleApp.Sheets('REKAP').Cells(6,23).Value='COGS'
oleApp.Sheets('REKAP').Cells(6,23).Font.Bold = .T.
oleApp.Sheets('REKAP').Cells(6,23).Font.ColorIndex = 5

oleApp.Sheets('REKAP').Cells(6,24).Value='COGS'
oleApp.Sheets('REKAP').Cells(6,24).Font.Bold = .T.
oleApp.Sheets('REKAP').Cells(6,24).Font.ColorIndex = 5

oleApp.Sheets('REKAP').Cells(6,25).Value='COGS'
oleApp.Sheets('REKAP').Cells(6,25).Font.Bold = .T.
oleApp.Sheets('REKAP').Cells(6,25).Font.ColorIndex = 5

oleApp.Sheets('REKAP').Cells(6,26).Value='%'
oleApp.Sheets('REKAP').Cells(6,26).Font.Bold = .T.
oleApp.Sheets('REKAP').Cells(6,26).Font.ColorIndex = 5

oleApp.Sheets('REKAP').Cells(6,27).Value='GP 1'
oleApp.Sheets('REKAP').Cells(6,27).Font.Bold = .T.
oleApp.Sheets('REKAP').Cells(6,27).Font.ColorIndex = 5

oleApp.Sheets('REKAP').Cells(6,28).Value='%'
oleApp.Sheets('REKAP').Cells(6,28).Font.Bold = .T.
oleApp.Sheets('REKAP').Cells(6,28).Font.ColorIndex = 5

**** DETAIL LINE 2 ****

oleApp.Sheets('REKAP').Cells(7,1).Value='PRODUK'
oleApp.Sheets('REKAP').Cells(7,1).Font.Bold = .T.
oleApp.Sheets('REKAP').Cells(7,1).Font.ColorIndex = 5

oleApp.Sheets('REKAP').Cells(7,2).Value='SALES'
oleApp.Sheets('REKAP').Cells(7,2).Font.Bold = .T.
oleApp.Sheets('REKAP').Cells(7,2).Font.ColorIndex = 5

oleApp.Sheets('REKAP').Cells(7,3).Value='MARK UP'
oleApp.Sheets('REKAP').Cells(7,3).Font.Bold = .T.
oleApp.Sheets('REKAP').Cells(7,3).Font.ColorIndex = 5

oleApp.Sheets('REKAP').Cells(7,4).Value='MARK DOWN'
oleApp.Sheets('REKAP').Cells(7,4).Font.Bold = .T.
oleApp.Sheets('REKAP').Cells(7,4).Font.ColorIndex = 5

oleApp.Sheets('REKAP').Cells(7,5).Value='%'
oleApp.Sheets('REKAP').Cells(7,5).Font.Bold = .T.
oleApp.Sheets('REKAP').Cells(7,5).Font.ColorIndex = 5

oleApp.Sheets('REKAP').Cells(7,6).Value='FAKTUR'
oleApp.Sheets('REKAP').Cells(7,6).Font.Bold = .T.
oleApp.Sheets('REKAP').Cells(7,6).Font.ColorIndex = 5

oleApp.Sheets('REKAP').Cells(7,7).Value='CABANG'
oleApp.Sheets('REKAP').Cells(7,7).Font.Bold = .T.
oleApp.Sheets('REKAP').Cells(7,7).Font.ColorIndex = 5

oleApp.Sheets('REKAP').Cells(7,8).Value='%'
oleApp.Sheets('REKAP').Cells(7,8).Font.Bold = .T.
oleApp.Sheets('REKAP').Cells(7,8).Font.ColorIndex = 5

oleApp.Sheets('REKAP').Cells(7,9).Value='PRINCIPAL'
oleApp.Sheets('REKAP').Cells(7,9).Font.Bold = .T.
oleApp.Sheets('REKAP').Cells(7,9).Font.ColorIndex = 5

oleApp.Sheets('REKAP').Cells(7,10).Value='%'
oleApp.Sheets('REKAP').Cells(7,10).Font.Bold = .T.
oleApp.Sheets('REKAP').Cells(7,10).Font.ColorIndex = 5

oleApp.Sheets('REKAP').Cells(7,11).Value='DONI'
oleApp.Sheets('REKAP').Cells(7,11).Font.Bold = .T.
oleApp.Sheets('REKAP').Cells(7,11).Font.ColorIndex = 5

oleApp.Sheets('REKAP').Cells(7,12).Value='%'
oleApp.Sheets('REKAP').Cells(7,12).Font.Bold = .T.
oleApp.Sheets('REKAP').Cells(7,12).Font.ColorIndex = 5

oleApp.Sheets('REKAP').Cells(7,13).Value='CABANG'
oleApp.Sheets('REKAP').Cells(7,13).Font.Bold = .T.
oleApp.Sheets('REKAP').Cells(7,13).Font.ColorIndex = 5

oleApp.Sheets('REKAP').Cells(7,14).Value='%'
oleApp.Sheets('REKAP').Cells(7,14).Font.Bold = .T.
oleApp.Sheets('REKAP').Cells(7,14).Font.ColorIndex = 5

oleApp.Sheets('REKAP').Cells(7,15).Value='PRINCIPAL'
oleApp.Sheets('REKAP').Cells(7,15).Font.Bold = .T.
oleApp.Sheets('REKAP').Cells(7,15).Font.ColorIndex = 5

oleApp.Sheets('REKAP').Cells(7,16).Value='%'
oleApp.Sheets('REKAP').Cells(7,16).Font.Bold = .T.
oleApp.Sheets('REKAP').Cells(7,16).Font.ColorIndex = 5

oleApp.Sheets('REKAP').Cells(7,17).Value='TOTAL'
oleApp.Sheets('REKAP').Cells(7,17).Font.Bold = .T.
oleApp.Sheets('REKAP').Cells(7,17).Font.ColorIndex = 5

oleApp.Sheets('REKAP').Cells(7,18).Value='%'
oleApp.Sheets('REKAP').Cells(7,18).Font.Bold = .T.
oleApp.Sheets('REKAP').Cells(7,18).Font.ColorIndex = 5

oleApp.Sheets('REKAP').Cells(7,19).Value='HNA'
oleApp.Sheets('REKAP').Cells(7,19).Font.Bold = .T.
oleApp.Sheets('REKAP').Cells(7,19).Font.ColorIndex = 5

oleApp.Sheets('REKAP').Cells(7,20).Value=''
oleApp.Sheets('REKAP').Cells(7,20).Font.Bold = .T.
oleApp.Sheets('REKAP').Cells(7,20).Font.ColorIndex = 5

oleApp.Sheets('REKAP').Cells(7,21).Value=''
oleApp.Sheets('REKAP').Cells(7,21).Font.Bold = .T.
oleApp.Sheets('REKAP').Cells(7,21).Font.ColorIndex = 5

oleApp.Sheets('REKAP').Cells(7,22).Value=''
oleApp.Sheets('REKAP').Cells(7,22).Font.Bold = .T.
oleApp.Sheets('REKAP').Cells(7,22).Font.ColorIndex = 5

oleApp.Sheets('REKAP').Cells(7,23).Value='FAKTUR'

```
oleApp.Sheets('REKAP').Cells(7,23).Font.Bold = .T.  
oleApp.Sheets('REKAP').Cells(7,23).Font.ColorIndex = 5
```

```
oleApp.Sheets('REKAP').Cells(7,24).Value='RETUR'  
oleApp.Sheets('REKAP').Cells(7,24).Font.Bold = .T.  
oleApp.Sheets('REKAP').Cells(7,24).Font.ColorIndex = 5
```

```
oleApp.Sheets('REKAP').Cells(7,25).Value='DOKUMEN'  
oleApp.Sheets('REKAP').Cells(7,25).Font.Bold = .T.  
oleApp.Sheets('REKAP').Cells(7,25).Font.ColorIndex = 5
```

```
oleApp.Sheets('REKAP').Cells(7,26).Value=""  
oleApp.Sheets('REKAP').Cells(7,26).Font.Bold = .T.  
oleApp.Sheets('REKAP').Cells(7,26).Font.ColorIndex = 5
```

```
oleApp.Sheets('REKAP').Cells(7,27).Value=""  
oleApp.Sheets('REKAP').Cells(7,27).Font.Bold = .T.  
oleApp.Sheets('REKAP').Cells(7,27).Font.ColorIndex = 5
```

```
InRow = 9  
SELECT REKAP2008  
SET ORDER TO KEY2  
GO top  
_xkodesup = rekap2008.xkodesup  
_supplier = rekap2008.supplier  
_xdivisi = rekap2008.xkodedept  
_xdivisix = rekap2008.division  
Formulax = ""  
Frmx1 = ""  
Frmx2 = ""  
_fist = .T.  
_rhit1 = 0  
DIMENSION hitdiv(100),hitgt(500)  
hitdiv(1) = 0  
hitgt(1) = 0  
_divx = 1  
_divy = 1  
DO WHILE !EOF()  
  IF _fist  
    oleApp.Sheets('REKAP').Cells(InRow,1).Value=_supplier  
    oleApp.Sheets('REKAP').Cells(InRow,1).Font.Bold = .T.  
    oleApp.Sheets('REKAP').Cells(InRow,1).Font.ColorIndex = 5  
    oleApp.Sheets('REKAP').Cells(InRow,1).Font.Size = 12  
    _fist = .F.  
    _xkodesup = rekap2008.xkodesup  
    _supplier = rekap2008.supplier  
    InRow = InRow + 1  
    _rhit1 = _rhit1 + 1  
    _rhitung = 0  
  ELSE  
    _xkodesup = rekap2008.xkodesup  
    _supplier = rekap2008.supplier  
    _xdivisi = rekap2008.xkodedept  
  endif  
  
oleApp.Sheets('REKAP').Cells(InRow,1).Value="" +rekap2008.productgrp  
oleApp.Sheets('REKAP').Cells(InRow,1).Font.Bold = .T.
```

```
oleApp.Sheets('REKAP').Cells(InRow,1).Font.ColorIndex = 10
oleApp.Sheets('REKAP').Cells(InRow,1).Font.Size = 10
```

*sb1 (GROS SALES)

```
oleApp.Sheets('REKAP').Cells(InRow,2).Value=rekap2008.gros_sales
oleApp.Sheets('REKAP').Cells(InRow,2).Font.Size = 10
oleApp.Sheets('REKAP').Cells(InRow,2).NumberFormat = "#,##0.00_);[Red](#,##0.00)"
```

*sb2 (SELISIH HARGA - MARK UP)

```
oleApp.Sheets('REKAP').Cells(InRow,3).Value=rekap2008.mark_up * -1
oleApp.Sheets('REKAP').Cells(InRow,3).Font.Size = 10
oleApp.Sheets('REKAP').Cells(InRow,3).NumberFormat = "#,##0.00_);[Red](#,##0.00)"
```

*sb3 (SELISIH HARGA - MARK DOWN)

```
oleApp.Sheets('REKAP').Cells(InRow,4).Value=rekap2008.mark_down * -1
oleApp.Sheets('REKAP').Cells(InRow,4).Font.Size = 10
oleApp.Sheets('REKAP').Cells(InRow,4).NumberFormat = "#,##0.00_);[Red](#,##0.00)"
```

*sb4 (PROSENTASE) GROS SALES

```
oleApp.Sheets('REKAP').Cells(InRow,5).FormulaR1C1 = "=if(RC[-3]=0,0,(RC[-3]/RC[-3])*100)"
oleApp.Sheets('REKAP').Cells(InRow,5).Font.Size = 10
```

*sb6 (HARGA FAKTUR)

```
oleApp.Sheets('REKAP').Cells(InRow,6).FormulaR1C1 = "=RC[-4]+RC[-3]+RC[-2]"
oleApp.Sheets('REKAP').Cells(InRow,6).Font.Size = 10
oleApp.Sheets('REKAP').Cells(InRow,6).NumberFormat = "#,##0.00_);[Red](#,##0.00)"
```

*sb7 (DONI CABANG)

```
oleApp.Sheets('REKAP').Cells(InRow,7).Value=rekap2008.cdoni*-1
oleApp.Sheets('REKAP').Cells(InRow,7).Font.Size = 10
oleApp.Sheets('REKAP').Cells(InRow,7).NumberFormat = "#,##0.00_);[Red](#,##0.00)"
```

*sb8 (PROSENTASE)

```
oleApp.Sheets('REKAP').Cells(InRow,8).FormulaR1C1 = "=IF(RC[-6]=0,0,(RC[-1]/RC[-6])*100)"
oleApp.Sheets('REKAP').Cells(InRow,8).Font.Size = 10
oleApp.Sheets('REKAP').Cells(InRow,8).NumberFormat = "#,##0.00_);[Red](#,##0.00)"
```

*sb9 (DONI PRINCIPAL)

```
oleApp.Sheets('REKAP').Cells(InRow,9).Value=rekap2008.pdoni*-1
oleApp.Sheets('REKAP').Cells(InRow,9).Font.Size = 10
oleApp.Sheets('REKAP').Cells(InRow,9).NumberFormat = "#,##0.00_);[Red](#,##0.00)"
```

*sb10 (PROSENTASE)

```
oleApp.Sheets('REKAP').Cells(InRow,10).FormulaR1C1 = "=IF(RC[-8]=0,0,(RC[-1]/RC[-8])*100)"
oleApp.Sheets('REKAP').Cells(InRow,10).Font.Size = 10
oleApp.Sheets('REKAP').Cells(InRow,10).NumberFormat = "#,##0.00_);[Red](#,##0.00)"
```

*sb11 (TOTAL DONI)

```
oleApp.Sheets('REKAP').Cells(InRow,11).FormulaR1C1 = "=RC[-4]+RC[-2]"
oleApp.Sheets('REKAP').Cells(InRow,11).Font.Size = 10
oleApp.Sheets('REKAP').Cells(InRow,11).NumberFormat = "#,##0.00_);[Red](#,##0.00)"
```

*sb12 (PROSENTASE)

```
oleApp.Sheets('REKAP').Cells(InRow,12).FormulaR1C1 = "=IF(RC[-10]=0,0,(RC[-1]/RC[-10])*100)"
oleApp.Sheets('REKAP').Cells(InRow,12).Font.Size = 10
oleApp.Sheets('REKAP').Cells(InRow,12).NumberFormat = "#,##0.00_);[Red](#,##0.00)"
```

**

* revenue 1 *

```
hit1 = rekap2008.hrgfaktor+((rekap2008.cdoni+rekap2008.pdoni)*-1)
```

*sb13 (DOFI CABANG)

```
oleApp.Sheets('REKAP').Cells(InRow,13).Value=cdofi*-1
oleApp.Sheets('REKAP').Cells(InRow,13).Font.Size = 10
oleApp.Sheets('REKAP').Cells(InRow,13).NumberFormat = "#,##0.00_);[Red](#,##0.00)"
```

*sb14 (PROSENTASE)

```
oleApp.Sheets('REKAP').Cells(InRow,14).FormulaR1C1 = "=IF(RC[-12]=0,0,(RC[-1]/RC[-12])*100)"
oleApp.Sheets('REKAP').Cells(InRow,14).Font.Size = 10
```

```

oleApp.Sheets('REKAP').Cells(InRow,14).NumberFormat = "#,##0.00_);[Red](#,##0.00)"
*sb15 (DOFI PRINCIPAL)
oleApp.Sheets('REKAP').Cells(InRow,15).Value=pdofi*-1
oleApp.Sheets('REKAP').Cells(InRow,15).Font.Size = 10
oleApp.Sheets('REKAP').Cells(InRow,15).NumberFormat = "#,##0.00_);[Red](#,##0.00)"
*sb16 (PROSENTASE)
oleApp.Sheets('REKAP').Cells(InRow,16).FormulaR1C1 = "=IF(RC[-14]=0,0,(RC[-1]/RC[-14])*100)"
oleApp.Sheets('REKAP').Cells(InRow,16).Font.Size = 10
oleApp.Sheets('REKAP').Cells(InRow,16).NumberFormat = "#,##0.00_);[Red](#,##0.00)"
*sb17 (TOTAL DOFI)
oleApp.Sheets('REKAP').Cells(InRow,17).FormulaR1C1 = "=RC[-4]+RC[-2]"
oleApp.Sheets('REKAP').Cells(InRow,17).Font.Size = 10
oleApp.Sheets('REKAP').Cells(InRow,17).NumberFormat = "#,##0.00_);[Red](#,##0.00)"
*Sb18 (PROSENTASE DOFI TOTAL)
oleApp.Sheets('REKAP').Cells(InRow,18).FormulaR1C1 = "=IF(RC[-16]=0,0,(RC[-1]/RC[-16])*100)"
oleApp.Sheets('REKAP').Cells(InRow,18).Font.Size = 10
oleApp.Sheets('REKAP').Cells(InRow,18).NumberFormat = "#,##0.00_);[Red](#,##0.00)"
** hitungan revenue 2 *
hit2 = hit1 + ((rekap2008.cdofi+rekap2008.pdofi)*-1)

*sb19 (RETURN HNA)
oleApp.Sheets('REKAP').Cells(InRow,19).Value = rekap2008.sales_ret
oleApp.Sheets('REKAP').Cells(InRow,19).Font.Size = 10
oleApp.Sheets('REKAP').Cells(InRow,19).NumberFormat = "#,##0.00_);[Red](#,##0.00)"
*sb20 (PROSENTASE)
oleApp.Sheets('REKAP').Cells(InRow,20).FormulaR1C1 = "=IF(RC[-18]=0,0,(RC[-1]/RC[-18])*100)"
oleApp.Sheets('REKAP').Cells(InRow,20).Font.Size = 10
oleApp.Sheets('REKAP').Cells(InRow,20).NumberFormat = "#,##0.00_);[Red](#,##0.00)"
*sb21 (REVENUE)
*oleApp.Sheets('REKAP').Cells(InRow,21).Value = hit2
oleApp.Sheets('REKAP').Cells(InRow,21).FormulaR1C1 = "=RC[-15]+RC[-10]+RC[-4]+RC[-2]"
oleApp.Sheets('REKAP').Cells(InRow,21).Font.Size = 10
oleApp.Sheets('REKAP').Cells(InRow,21).NumberFormat = "#,##0.00_);[Red](#,##0.00)"
*sb22 (PROSENTASE REVENUE)
oleApp.Sheets('REKAP').Cells(InRow,22).FormulaR1C1 = "=IF(RC[-20]=0,0,(RC[-1]/RC[-20])*100)"
oleApp.Sheets('REKAP').Cells(InRow,22).Font.Size = 10
oleApp.Sheets('REKAP').Cells(InRow,22).NumberFormat = "#,##0.00_);[Red](#,##0.00)"

** hitungan GP 1 **
hit3 = hit2+(rekap2008.hpp_total*-1)

*sb23 (COGS FAKTUR)
oleApp.Sheets('REKAP').Cells(InRow,23).Value = rekap2008.hpp_fakt * -1
oleApp.Sheets('REKAP').Cells(InRow,23).Font.Size = 10
oleApp.Sheets('REKAP').Cells(InRow,23).NumberFormat = "#,##0.00_);[Red](#,##0.00)"
*sb24 (COGS RETURN)
oleApp.Sheets('REKAP').Cells(InRow,24).Value = rekap2008.hpp_retr * -1
oleApp.Sheets('REKAP').Cells(InRow,24).Font.Size = 10
oleApp.Sheets('REKAP').Cells(InRow,24).NumberFormat = "#,##0.00_);[Red](#,##0.00)"

** hitung gp1
hit4 = hit3-(rekap2008.pdoni*-1)-((rekap2008.cdofi+rekap2008.pdofi)*-1)

*sb25 (COGS DOKUMEN)
*oleApp.Sheets('REKAP').Cells(InRow,25).Value = rekap2008.hpp_total
oleApp.Sheets('REKAP').Cells(InRow,25).FormulaR1C1 = "=RC[-2]+RC[-1]"
oleApp.Sheets('REKAP').Cells(InRow,25).Font.Size = 10
oleApp.Sheets('REKAP').Cells(InRow,25).NumberFormat = "#,##0.00_);[Red](#,##0.00)"

```

```

*sb26 (PROSENTASE COGS)
oleApp.Sheets('REKAP').Cells(InRow,26).FormulaR1C1 = "=IF(RC[-24]=0,0,(RC[-1]/RC[-24])*100)"
oleApp.Sheets('REKAP').Cells(InRow,26).Font.Size = 10
oleApp.Sheets('REKAP').Cells(InRow,26).NumberFormat = "#,##0.00_);[Red](#,##0.00)"
*sb27 (GP 1)
*oleApp.Sheets('REKAP').Cells(InRow,27).Value = hit4
oleApp.Sheets('REKAP').Cells(InRow,27).FormulaR1C1 = "=RC[-6]+RC[-2]"
oleApp.Sheets('REKAP').Cells(InRow,27).Font.Size = 10
oleApp.Sheets('REKAP').Cells(InRow,27).NumberFormat = "#,##0.00_);[Red](#,##0.00)"
*sb28 (GP 1 %)
oleApp.Sheets('REKAP').Cells(InRow,28).FormulaR1C1 = "=IF(RC[-26]=0,0,(RC[-1]/RC[-26])*100)"
oleApp.Sheets('REKAP').Cells(InRow,28).Font.Size = 10
oleApp.Sheets('REKAP').Cells(InRow,28).NumberFormat = "#,##0.00_);[Red](#,##0.00)"

```

* Hitung Sum Total *

```

sb1 = sb1 + rekap2008.gros_sales
sb2 = sb2 + rekap2008.sales_ret
sb3 = sb3 + rekap2008.salesafret
sb4 = ''
sb5 = sb5 + (rekap2008.sel_harga * -1)
sb6 = sb6 + rekap2008.hrgfaktor
sb7 = sb7 + rekap2008.cdoni*-1
sb8 = IIF(sb3=0,0,(sb7/sb3)*100)
sb9 = sb9 + rekap2008.pdoni*-1
sb10 = IIF(sb3=0,0,(sb9/sb3)*100)
sb11 = sb11 + (rekap2008.cdoni+rekap2008.pdoni)*-1
sb12 = IIF(sb3=0,0,(sb11/sb3)*100)
sb13 = sb13 + rekap2008.hrgfaktor+((rekap2008.cdoni+rekap2008.pdoni)*-1)
sb14 = IIF(sb3=0,0,(sb13/sb3)*100)
sb15 = sb15 + rekap2008.cdofi*-1
sb16 = IIF(sb3=0,0,(sb15/sb3)*100)
sb17 = sb17 + rekap2008.pdofi*-1
sb18 = IIF(sb3=0,0,(sb17/sb3)*100)
sb19 = sb19 + (rekap2008.cdofi+rekap2008.pdofi)*-1
sb20 = sb20 + hit2
sb21 = IIF(sb3=0,0,(sb17/sb3)*100)
sb21 = IIF(sb3=0,0,(sb20/sb3)*100)
sb22 = sb22 + rekap2008.hpp_total*-1
sb23 = IIF(sb3=0,0,(sb22/sb3)*100)
sb24 = sb24 + hit3
sb25 = IIF(sb3=0,0,(sb24/sb3)*100)
sb26 = sb26 + hit4
sb27 = IIF(sb3=0,0,(sb26/sb3)*100)

```

thisform.Label3.Caption = 'Create Data '+ALLTRIM(_supplier)+' '+rekap2008.productgrp

```

InRow = InRow + 1
_rhitung = _rhitung + 1
_rhit1 = _rhit1 + 1
SKIP

```

```

IF rekap2008.xkodesup <> _xkodesup
  _fist = .T.
  _xkodesup = rekap2008.xkodesup
  _supplier = rekap2008.supplier
  ** Sum Total **
  x2 = 0
  FOR x1 = 1 TO 27

```

```

oleApp.Sheets('REKAP').Cells(InRow,x1+1).FormulaR1C1 = "=SUM(R[-"+ALLTRIM(STR(_rhitung))+"]C:R[-1]C)"
oleApp.Sheets('REKAP').Cells(InRow,x1+1).NumberFormat = "#,##0.00_);[Red](#,##0.00)"
thisform.Label3.Caption = "Create Grand Total Summary (" + ALLTRIM(STR(InRow)) + " , " + ALLTRIM(STR(x2)) + ")"
* hitung prosentase *
oleApp.Sheets('REKAP').Cells(InRow,5).FormulaR1C1 = "=IF(RC[-3]=0,0,(RC[-3]/RC[-3])*100)"
oleApp.Sheets('REKAP').Cells(InRow,8).FormulaR1C1 = "=IF(RC[-6]=0,0,(RC[-1]/RC[-6])*100)"
oleApp.Sheets('REKAP').Cells(InRow,10).FormulaR1C1 = "=IF(RC[-8]=0,0,(RC[-1]/RC[-8])*100)"
oleApp.Sheets('REKAP').Cells(InRow,12).FormulaR1C1 = "=IF(RC[-10]=0,0,(RC[-1]/RC[-10])*100)"
oleApp.Sheets('REKAP').Cells(InRow,14).FormulaR1C1 = "=IF(RC[-12]=0,0,(RC[-1]/RC[-12])*100)"
oleApp.Sheets('REKAP').Cells(InRow,16).FormulaR1C1 = "=IF(RC[-14]=0,0,(RC[-1]/RC[-14])*100)"
oleApp.Sheets('REKAP').Cells(InRow,18).FormulaR1C1 = "=IF(RC[-16]=0,0,(RC[-1]/RC[-16])*100)"
oleApp.Sheets('REKAP').Cells(InRow,20).FormulaR1C1 = "=IF(RC[-18]=0,0,(RC[-1]/RC[-18])*100)"
oleApp.Sheets('REKAP').Cells(InRow,22).FormulaR1C1 = "=IF(RC[-20]=0,0,(RC[-1]/RC[-20])*100)"
oleApp.Sheets('REKAP').Cells(InRow,22).FormulaR1C1 = "=IF(RC[-20]=0,0,(RC[-1]/RC[-20])*100)"
oleApp.Sheets('REKAP').Cells(InRow,28).FormulaR1C1 = "=IF(RC[-26]=0,0,(RC[-1]/RC[-26])*100)"

```

NEXT

* nilai InRow masukan ke array

* untuk menjumlahkan sub total supller

STORE Formulax + ALLTRIM(STR(InRow))+" , " TO Formulax

STORE InRow TO hitdiv(_divx)

```

STORE 0 TO sb1,sb2,sb3,sb4,sb5,sb6,sb7,sb8,sb9,sb10, ;
sb11,sb12,sb13,sb14,sb15,sb16,sb17,sb18,sb19,sb20, ;
sb21,sb22,sb23,sb24,sb25,sb26,sb27,sb28,sb29,sb30,sb31

```

InRow = InRow + 2

_rhit1 = _rhit1 + 2

_divx = _divx + 1

ENDIF

IF rekap2008.xkodedept <> _xdivisi

oleApp.Sheets('REKAP').Cells(InRow,1).Value = 'TOTAL DIVISI :'+UPPER(_xdivisix)

oleApp.Sheets('REKAP').Cells(InRow,1).Font.Bold = .T.

oleApp.Sheets('REKAP').Cells(InRow,1).Font.ColorIndex = 16

oleApp.Sheets('REKAP').Cells(InRow,1).Font.Size = 13

STORE InRow TO hitgt(_divy)

_divx = _divx - 1

FOR c1 = 1 TO _divx

STORE Frmx1 + 'R[-'+ALLTRIM(STR(InRow - (hitdiv(c1))))+']C'+IIF(_divx<>c1,'+',') TO Frmx1

**hitdiv(c1) = 0

NEXT

Frmx1 = "=" + Frmx1

FOR x1 = 1 TO 27

oleApp.Sheets('REKAP').Cells(InRow,x1+1).FormulaR1C1 = Frmx1

oleApp.Sheets('REKAP').Cells(InRow,x1+1).NumberFormat = "#,##0.00_);[Red](#,##0.00)"

oleApp.Sheets('REKAP').Cells(InRow,1).Font.Bold = .T.

oleApp.Sheets('REKAP').Cells(InRow,1).Font.ColorIndex = 16

oleApp.Sheets('REKAP').Cells(InRow,1).Font.Size = 13

* hitung prosentase *

oleApp.Sheets('REKAP').Cells(InRow,5).FormulaR1C1 = "=IF(RC[-3]=0,0,(RC[-3]/RC[-3])*100)"

oleApp.Sheets('REKAP').Cells(InRow,8).FormulaR1C1 = "=IF(RC[-6]=0,0,(RC[-1]/RC[-6])*100)"

oleApp.Sheets('REKAP').Cells(InRow,10).FormulaR1C1 = "=IF(RC[-8]=0,0,(RC[-1]/RC[-8])*100)"

oleApp.Sheets('REKAP').Cells(InRow,12).FormulaR1C1 = "=IF(RC[-10]=0,0,(RC[-1]/RC[-10])*100)"

oleApp.Sheets('REKAP').Cells(InRow,14).FormulaR1C1 = "=IF(RC[-12]=0,0,(RC[-1]/RC[-12])*100)"

oleApp.Sheets('REKAP').Cells(InRow,16).FormulaR1C1 = "=IF(RC[-14]=0,0,(RC[-1]/RC[-14])*100)"

```

oleApp.Sheets('REKAP').Cells(InRow,18).FormulaR1C1 = "=IF(RC[-16]=0,0,(RC[-1]/RC[-16])*100)"
oleApp.Sheets('REKAP').Cells(InRow,20).FormulaR1C1 = "=IF(RC[-18]=0,0,(RC[-1]/RC[-18])*100)"
oleApp.Sheets('REKAP').Cells(InRow,22).FormulaR1C1 = "=IF(RC[-20]=0,0,(RC[-1]/RC[-20])*100)"
oleApp.Sheets('REKAP').Cells(InRow,22).FormulaR1C1 = "=IF(RC[-20]=0,0,(RC[-1]/RC[-20])*100)"
oleApp.Sheets('REKAP').Cells(InRow,28).FormulaR1C1 = "=IF(RC[-26]=0,0,(RC[-1]/RC[-26])*100)"

```

NEXT

```

_xdivisi = rekap2008.xkodedept
_xdivisix = rekap2008.division
Formulax = ""
Frmx1 = ""
InRow = InRow + 2
_rhit1 = _rhit1 + 2
_divx = 1
_divy = _divy + 1
ENDIF

```

ENDDO

*** grand total printing ***

```

InRow = InRow + 2
_rhit1 = _rhit1 + 2
x2 = 0
oleApp.Sheets('REKAP').Cells(InRow,1).Value = 'GRAND TOTAL : '
oleApp.Sheets('REKAP').Cells(InRow,1).Font.Bold = .T.
oleApp.Sheets('REKAP').Cells(InRow,1).Font.ColorIndex = 5
oleApp.Sheets('REKAP').Cells(InRow,1).Font.Size = 16

```

```

_divy = _divy - 1
FOR c2 = 1 TO _divy
  STORE Frmx2 + 'R[-'+ALLTRIM(STR(InRow - (hitgt(c2))))+']C'+IIF(_divy<>c2,'+',') TO Frmx2
  **hitdiv(c1) = 0

```

NEXT

Frmx2 = "=" + Frmx2

FOR x1 = 1 TO 27

```

*nilai = 'sg'+RIGHT('00'+LTRIM(STR(x1)),2)
*oleApp.Sheets('REKAP').Cells(InRow,x1+1).FormulaR1C1 = "=SUM(R[-'+ALLTRIM(STR(_rhit1))+']C:R[-1]C)/2"
oleApp.Sheets('REKAP').Cells(InRow,x1+1).FormulaR1C1 = Frmx2
oleApp.Sheets('REKAP').Cells(InRow,x1+1).NumberFormat = "#,##0.00_";[Red](#,##0.00)"
thisform.Label3.Caption = "Create Summary (" + ALLTRIM(STR(InRow)) + ", " + ALLTRIM(STR(x2)) + ")"
* hitung prosentase - gantikan posisi hitungan *
oleApp.Sheets('REKAP').Cells(InRow,5).FormulaR1C1 = "=IF(RC[-3]=0,0,(RC[-3]/RC[-3])*100)"
oleApp.Sheets('REKAP').Cells(InRow,8).FormulaR1C1 = "=IF(RC[-6]=0,0,(RC[-1]/RC[-6])*100)"
oleApp.Sheets('REKAP').Cells(InRow,10).FormulaR1C1 = "=IF(RC[-8]=0,0,(RC[-1]/RC[-8])*100)"
oleApp.Sheets('REKAP').Cells(InRow,12).FormulaR1C1 = "=IF(RC[-10]=0,0,(RC[-1]/RC[-10])*100)"
oleApp.Sheets('REKAP').Cells(InRow,14).FormulaR1C1 = "=IF(RC[-12]=0,0,(RC[-1]/RC[-12])*100)"
oleApp.Sheets('REKAP').Cells(InRow,16).FormulaR1C1 = "=IF(RC[-14]=0,0,(RC[-1]/RC[-14])*100)"
oleApp.Sheets('REKAP').Cells(InRow,18).FormulaR1C1 = "=IF(RC[-16]=0,0,(RC[-1]/RC[-16])*100)"
oleApp.Sheets('REKAP').Cells(InRow,20).FormulaR1C1 = "=IF(RC[-18]=0,0,(RC[-1]/RC[-18])*100)"
oleApp.Sheets('REKAP').Cells(InRow,22).FormulaR1C1 = "=IF(RC[-20]=0,0,(RC[-1]/RC[-20])*100)"
oleApp.Sheets('REKAP').Cells(InRow,22).FormulaR1C1 = "=IF(RC[-20]=0,0,(RC[-1]/RC[-20])*100)"
oleApp.Sheets('REKAP').Cells(InRow,28).FormulaR1C1 = "=IF(RC[-26]=0,0,(RC[-1]/RC[-26])*100)"

```

NEXT

```

oleApp.Cells(9,1).Columns.ColumnWidth = 40
OleApp.Cells(9,2).Select
oleapp.ActiveWindow.FreezePanes = .t.

IF FILE(new_excel_file+'.XLS')
    DELETE FILE (new_excel_file+'.XLS')
ENDIF
oleApp.ActiveWorkbook.SaveAs(new_excel_file)
oleApp.Quit
Release oleApp

_body = _headerx + CHR(10) + CHR(10)
_body = _body + _isi + CHR(10) + CHR(10)
_body = _body + "Sending date "+DTC( DATE() )+" "+TIME()

_dariemail = ALLTRIM(thisform.Text1.Value)
_keemail = ALLTRIM(thisform.Text2.Value)

IF _byemail = 1
    DO KIRIMMAIL WITH 'LAPORAN GROSS PROFIT',_body,_keemail,new_excel_file+'.XLS',_dariemail
ENDIF

CLOSE TABLES ALL
CLOSE DATABASES ALL

```

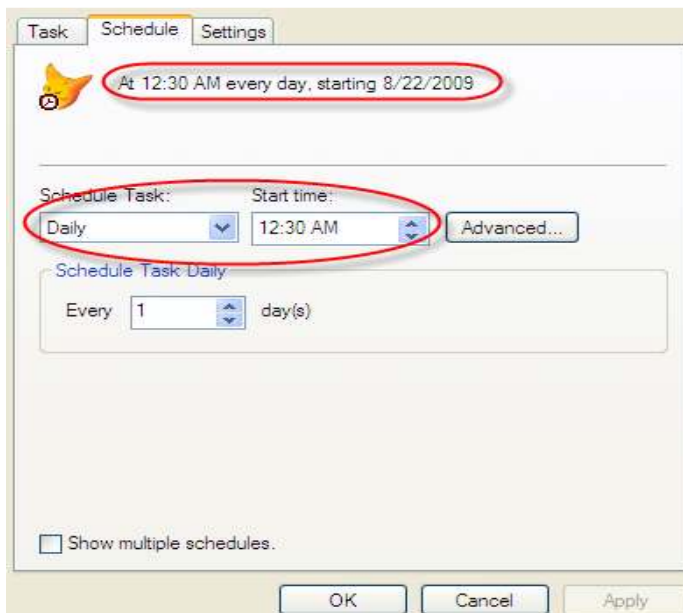
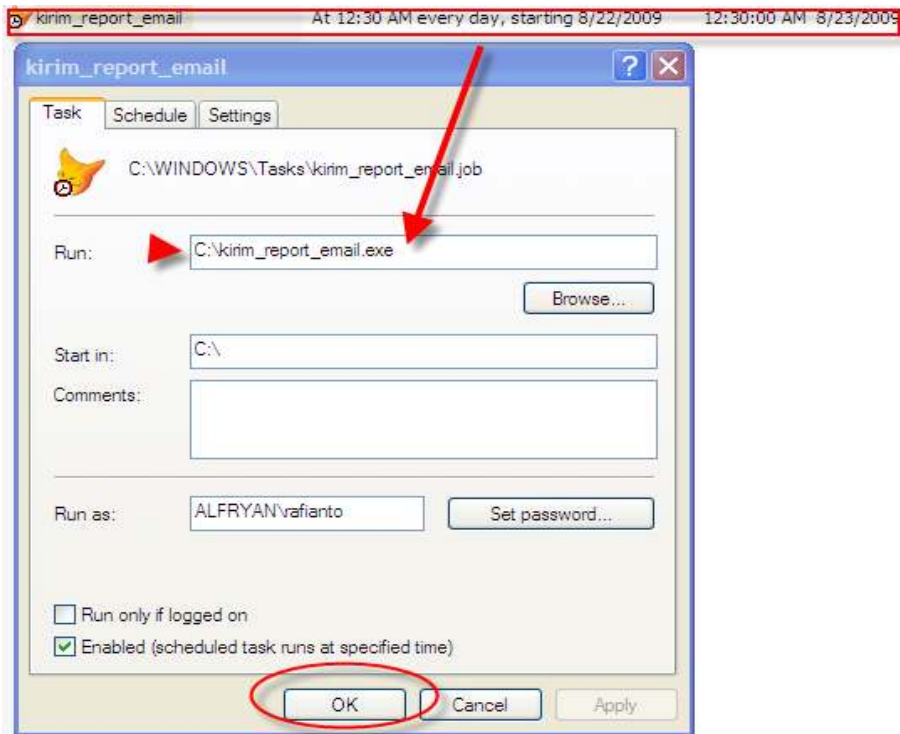
Seperti nya program tersebut bisa lebih disederhana kan dengan penggunaan procedure untuk perulangan proses (selamat berkreaitivitas)

Demikian Ilustrasi sedikit Program pembentukan Excel selanjut-nya di lakukan proses pengiriman data hasil olahan excel ke alamat email tertentu, selamat mencoba dan selamat berkreaitifitas, ilustrasi tersebut dapat di kembangkan lagi misal nya dengan mencatat log starting dan ending proses. menandakan Job telah dikerjakan utuh (done) oleh system.

Selain di gunakan untuk kebutuhan seperti itu dapat juga di gunakan untuk memberhentikan satu service tertentu misal nya me stop dan merestart OAS (Oracle Web service) guna kebutuhan maintenance backup Offline.

Dengan ***menggunakan Job Schedule Task, biarlah computer yang bekerja untuk kita***, tambahan lain kita bisa taruh starting log proses dan sekaligus ending nya, bisa kita proseskan lewat ***pengiriman log by SMS (Short Message System)*** yang nanti jika ada kesempatan kita bahas.

Berikut kurang lebih Job Schedule yang kita Jalankan malam hari mengerjakan **c:\kirim_report_email.exe** pada setiap jam 12:30am (malam)



Semoga Ulasan tersebut dapat bermanfaat.

Salam,
Mulyono Rafianto